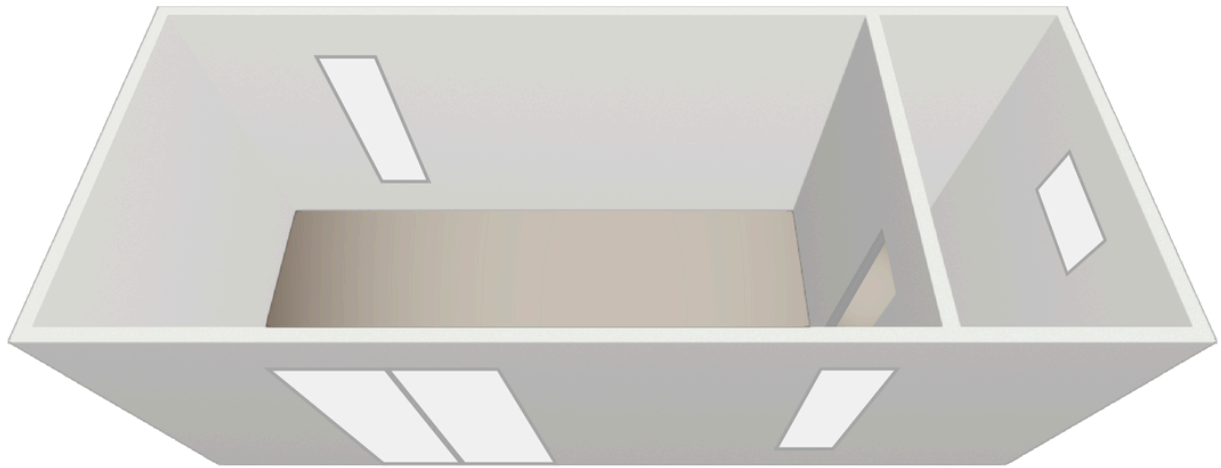
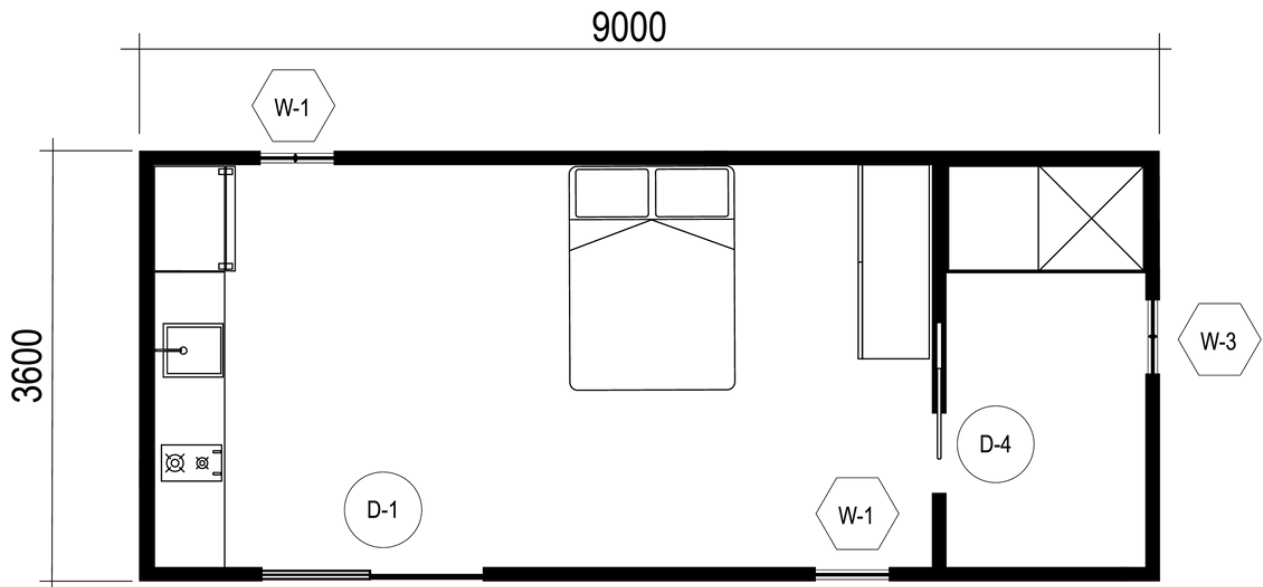


BUILDING SIZE  
**3.6m x 9m**



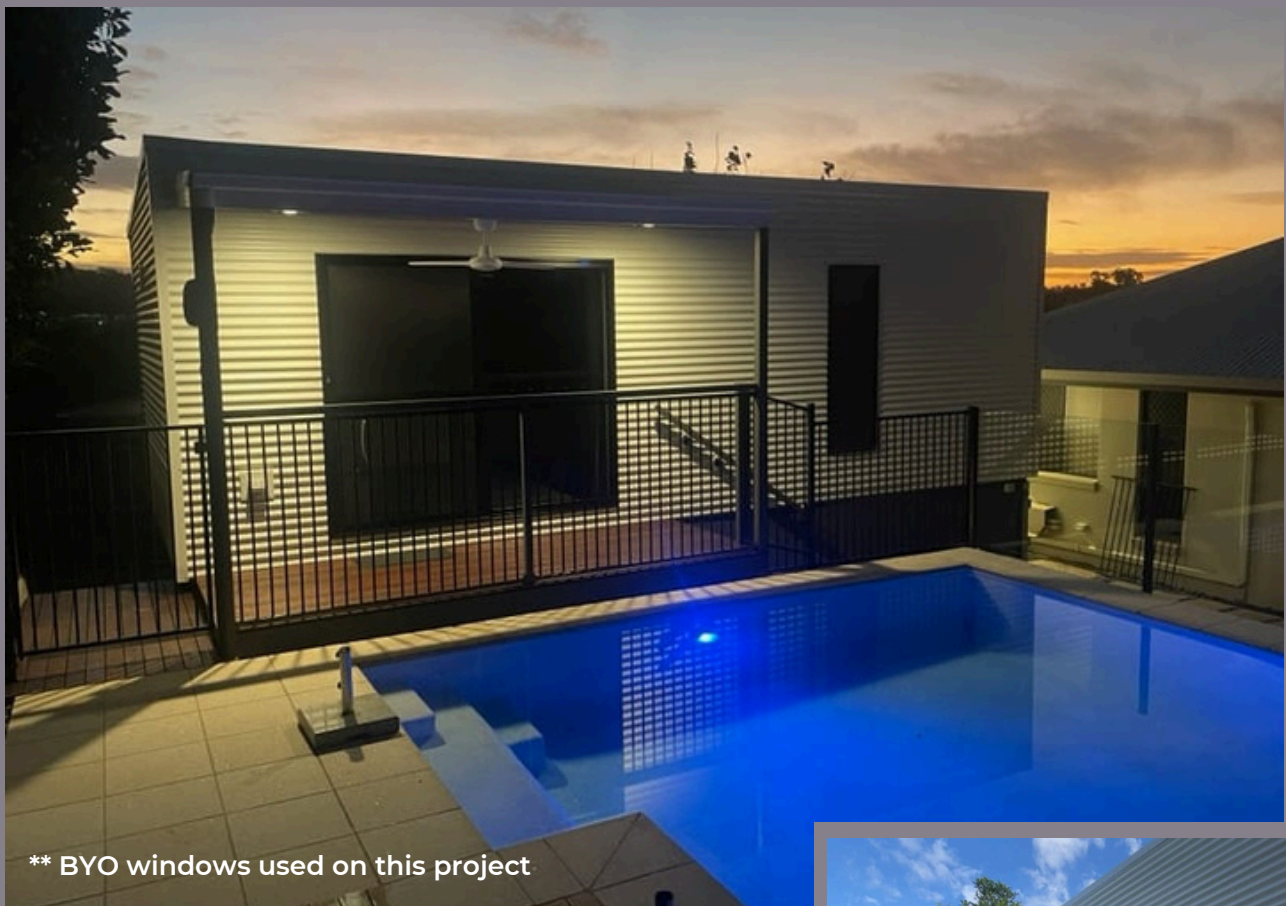
Floor plan



\*Internal fittings and furnishings are indicative only. Ask for list of inclusions.

PRODUCT	SKU
Flatpack building kit 3.6m x 9m <ul style="list-style-type: none"> <li>• Wall cladding colour: Surfmist</li> <li>• Gutter and barges colour: Surfmist</li> </ul>	<b>FBK-POD-KIT-3609</b>
8 x 600mm steel foundation piers (POD)	<b>FBK-FDN600-8X</b>
Deck + Veranda 1.5m x 4m flat-pack kit <ul style="list-style-type: none"> <li>• Under eaves/veranda colour: Surfmist</li> </ul>	<b>FBK-DKV-KIT-1504</b>
3 x 600mm steel foundation piers (Deck + Veranda)	<b>FBK-FDN-600-3X</b>
Internal lining kits per 18m <sup>2</sup> x2	<b>FBK-LK18X2</b>
Lintels for door & window openings 5LM	<b>FBK-LTL</b>
Internal dividing wall framing - 3.6m	<b>FBK-IWFRAME-1</b>
Double-glazed sliding door 2145mm x 1800mm (with screen)	<b>FBK-SKD-2145x1800</b>
Double-glazed awning-style window 600mm x 945mm (with screen)	<b>FBK-WIN-600X945-B</b>
Double-glazed windows modular combo A vertical - 1800mm x 600mm (with screen) x2	<b>HMN-WIN-CMBA-B</b>

## Design #11 sample pics



\*\* BYO windows used on this project



23 colours available

