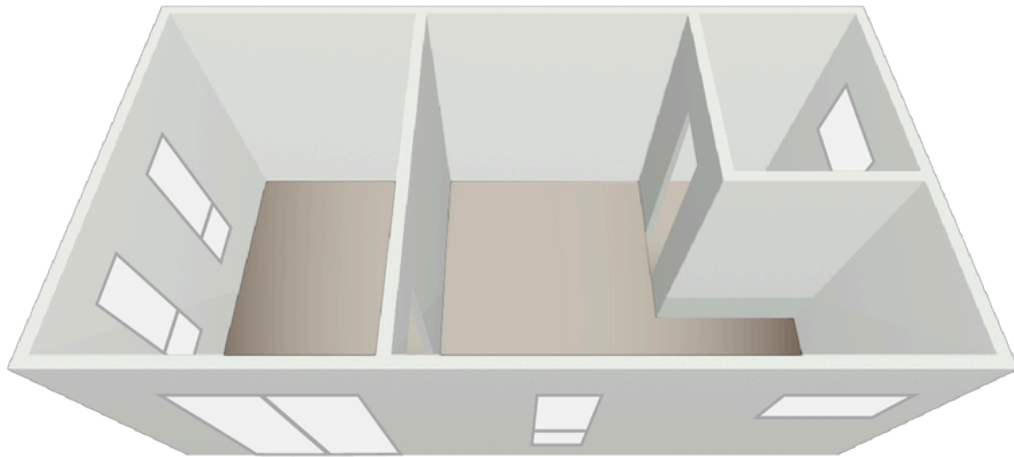


BUILDING SIZE

**4.5m x 8m**



Floor plan



\*Internal fittings and furnishings are indicative only. Ask for list of inclusions.

PRODUCT	SKU
Flatpack building kit 4.5m x 8m	<b>FBK-POD-KIT-4508</b>
Internal lining kits per 18m <sup>2</sup> x2	<b>FBK-LK18X2</b>
Lintels [Windows (3)660 + (2) 1260 + Door 1860 =6360 or 7LM]	<b>FBK-LTL</b>
Internal dividing wall framing - 4m	<b>FBK-IWFRAME-1</b>
Double-glazed windows modular combo A vertical – 1800mm x 600mm with flyscreen x3	<b>HMN-WIN-CMBA-B</b>
Double-glazed awning-style window 600mm x 1200mm with flyscreen x2	<b>HMN-WIN-600X1200-B</b>
Double-glazed sliding door 2145mm x 1800mm with flyscreen	<b>HMN-SLD-2145x1800-A</b>

\*\*This flatpack building kit may require optional foundation piers (8 x 600mm).