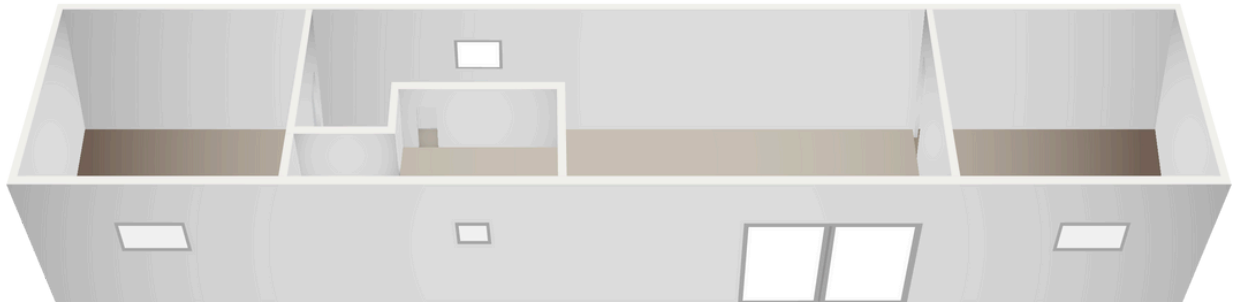
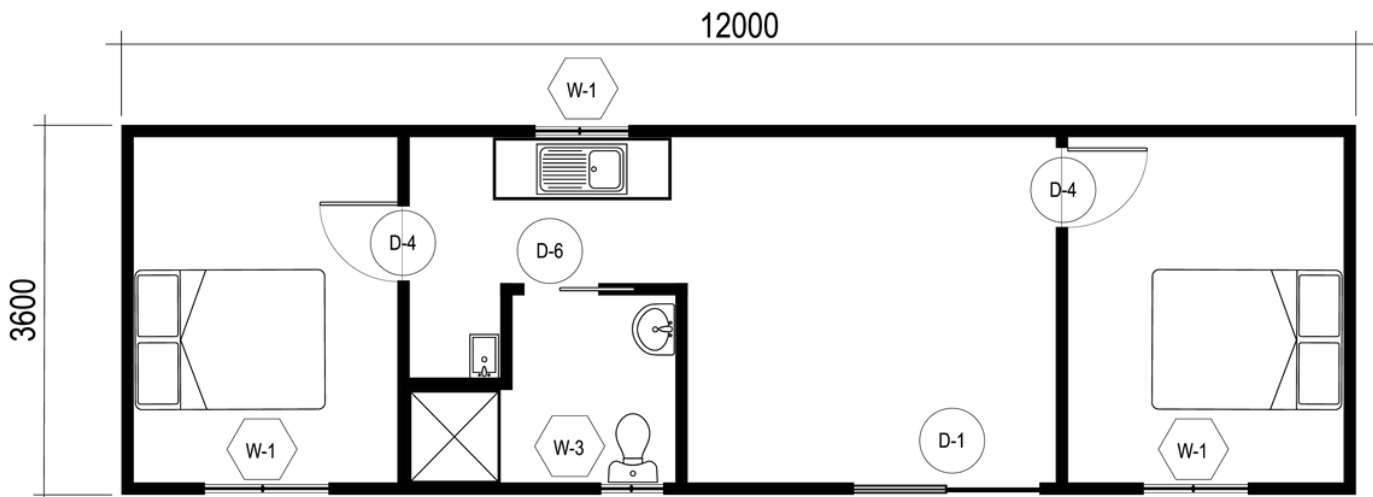


BUILDING SIZE
3.6m x 12m



Floor plan



*Internal fittings and furnishings are indicative only. Ask for list of inclusions.

PRODUCT	SKU
Flatpack building kit 3.6m x 12m	FBK-POD-KIT-3612
Internal lining kits per 24m ² x2	FBK-LK24X2
Lintels for door & window openings 4LM	FBK-LTL
Internal dividing wall framing (2 x 3.6m and 1 x 4.5m)	FBK-IWFRAME-1
Double-glazed sliding door 2145mm x 1800mm (with screen)	FBK-SKD-2145x1800
Double-glazed awning-style window 600mm x 600mm (with screen)	FBK-WIN-600X600
Double-glazed awning-style window 600mm x 900mm (with screen) x2	FBK-WIN-600X900
Double-glazed awning-style window 600mm x 1200mm (with screen)	FBK-WIN-600X1200

****This flatpack building kit may require optional foundation piers (10 x 600mm).**